

neocube[®]
modern style of fire



3D sintered ceramic
THE WORLD FIRST



neocube[®]
modern style of fire



THE WORLD FIRST

- High-quality 3D sintered ceramic
- 180-degree viewing window
- State-of-the-art combustion technology
- Integrated memory block

CALACATTA

WORLD FIRST

Unique surfaces for unique fireplaces. That is why neocube R is available in many different sintered ceramic surfaces. Each surface gives the neocube R fireplace a completely unique and special appearance. From modern to elegant, from a patina look to concrete and natural stone – it is all a question of the ceramic you choose. Always extremely high quality and durable.



Living White



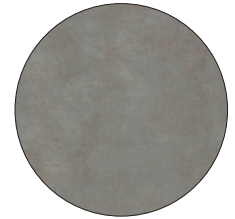
Calcatta



Travertino Bright



Travertino Dark



Concrete Grey



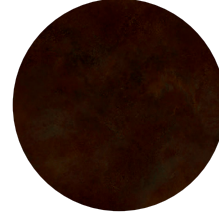
Living Corten



Black & White



Black Grey



Black Bronze



Living Black



HEAT STORING



WATERPROOF



100% NATURAL



RECYCLABLE



SCRATCH-RESISTANT



TEMPERATURE RESISTANT



HYGIENIC



UV RESISTANT



EASY TO CLEAN



FLEXIBLE



ACID AND ALKALI RESISTANT



ANTIBACTERIAL



LIVING
WHITE

In a unique production process (patent pending), large-format sintered ceramic panels are formed into three dimensions. The finished product retains all the unique properties of sintered ceramics, making it ideal for use in high-quality fireplaces.

3D sintered ceramic
THE WORLD FIRST



neocube[®]
modern style of fire



LIVING
CORTEN

3D sintered ceramic
THE WORLD FIRST



LIVING WHITE



CALACATTA



TRAVERTINO BRIGHT



TRAVERTINO DARK



CONCRETE GREY



LIVING CORTEN



BLACK & WHITE



BLACK GREY



BLACK BRONZE



LIVING BLACK





CONCRETE
GREY

neocube®
modern style of fire



BLACK FIREBOX

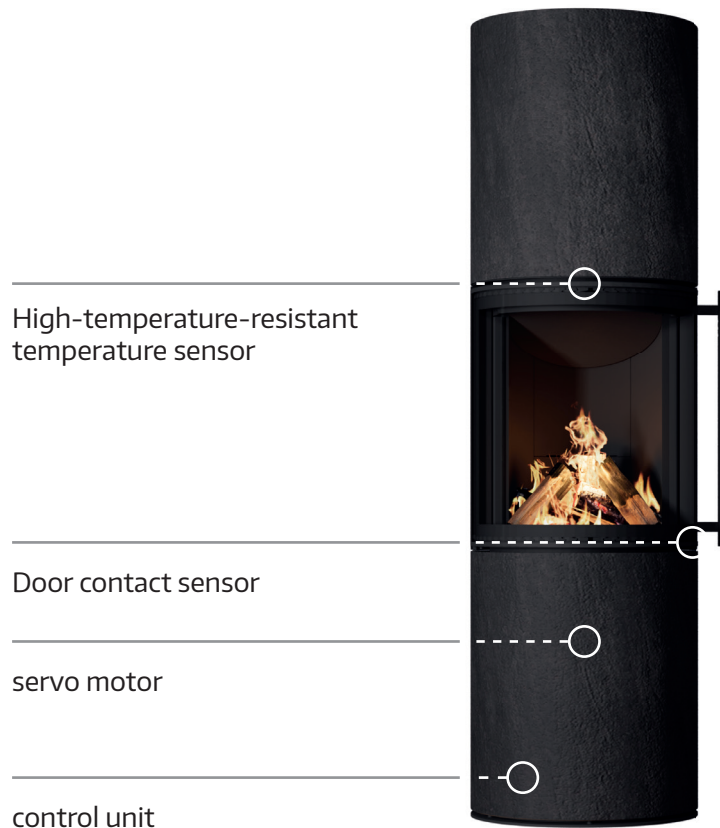


For a purist and straightforward design, every neocube R is also available with a black Thermotte firebox lining for a small additional charge.



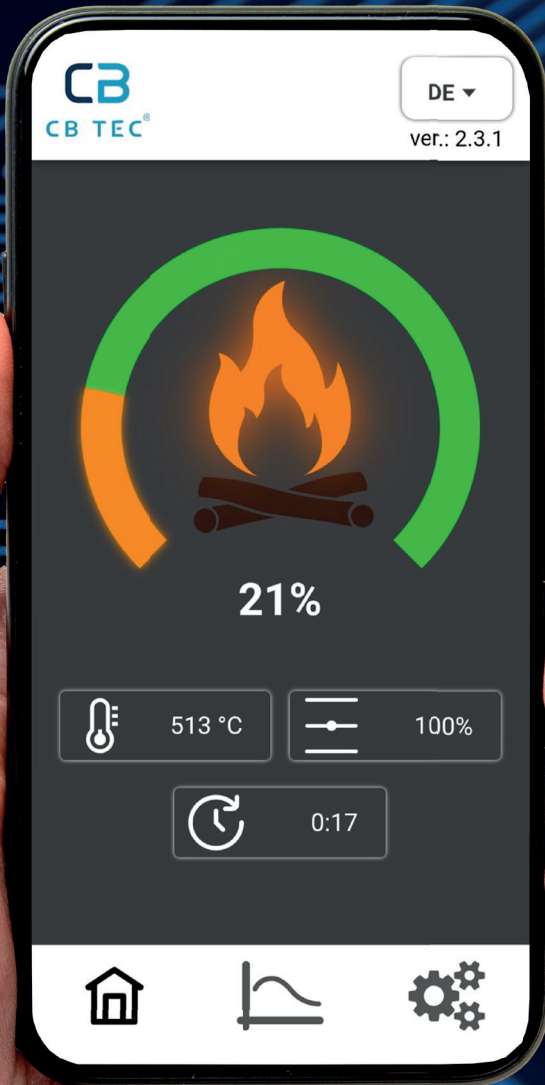


BURN CONTROL ABS Pro+



CB ABS Pro+

Every neocube R is designed for maximum efficiency and environmentally friendly combustion, with integrated combustion control available for each model.



- + ABS Pro+ App
- + Completely pre-installed
- + Door contact sensor
- + High-temperature-resistant temperature sensor
- + servo motor
- + control unit

Further information
on CB burn-in control
ABS Pro+



Technical data & list price

performance data

NW power, kW	6,5
Efficiency, %	> 85
Exhaust gas mass flow at NW, g/s	5
Exhaust gas temp. Exhaust pipe, °C	285
Minimum delivery pressure at NW, Pa	12
energy efficiency class	A+
Combustion air requirement, m3/h	14,0
Max. wood load kg/h	2,2

smoke pipe

Diameter ø in mm	150
Height in cm (rear departure)	27,20

Combustion air connection (rear and bottom possible*)

Diameter ø in mm	100
------------------	-----

Dimensions | Weight

Total height in cm	164,00
Total width in cm	47,00
Total depth in cm	47,00
Weight in kg (approx.)	185
Max. log length in cm	33
Disc dimensions in cm (W x D x H)	39 x 19 x 50

Tests | Approvals

DIBt	✓
DIN EN 16510	✓
1. BlmSchV. 2. BlmSchV.	✓ ✓
Italy	****
Denmark	✓

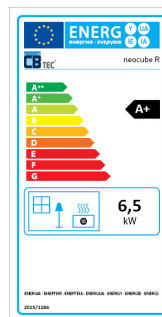
List price**

incl. VAT in EUR	5.490,00
excl. VAT in EUR	4.613,45

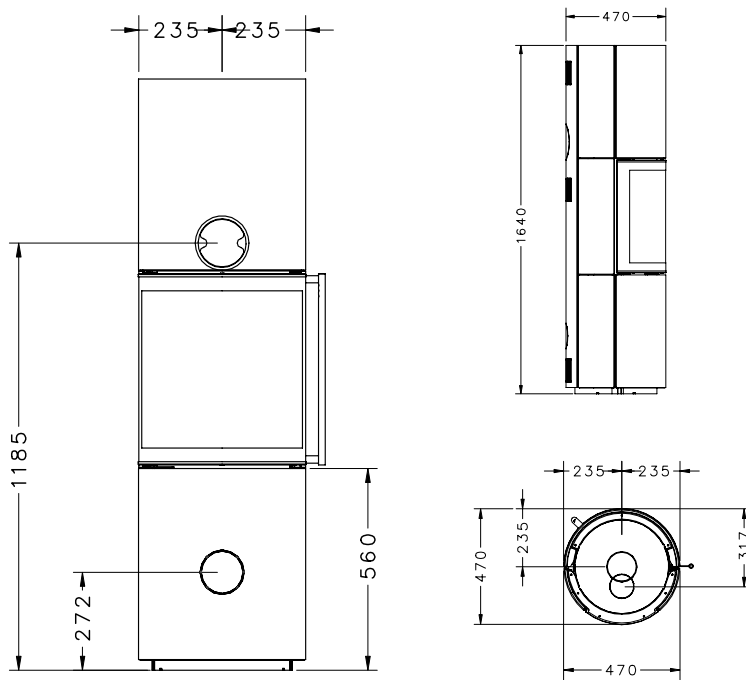
* The neocube R has a connection port on the bottom. From this port, you can connect to the bottom or back using a connecting cable.

Product data sheet in accordance with EU Regulation 2015/1186 & energy label

Supplier name or trademark:	CB-tec GmbH
Supplier model:	neocube R
Energy efficiency class of the model:	A+
Energy Efficiency Index EEI:	109,9
Fuel energy efficiency at rated heat output:	82,0
Fuel energy efficiency at minimum load (if applicable):	N.A.
Special precautions (during installation, maintenance):	See instructions



Technical drawing



The specified data for the neocube R correspond to preliminary tests and may vary slightly.

accessories

The neocube R can be equipped with optional additional storage made from natural stone.



additional memory	neocube R
Weight	approx. 38 kg
Price	355,00 EUR



CB-tec GmbH
 Behaimweg 2
 DE-87781 Ungerhausen
 Tel.: +49 (0)83 93 9469 - 0
 info@cb-tec.de
 www.cb-tec.de



Errors and misprints excepted. All information and statements in the catalog are valid as of 04-2025. All list prices shown in the catalog include VAT.
 **Prices for accessories and materials for connection and installation are not included. Manufacturing tolerances of +/- 2 mm apply to components.

neocube[®]
modern style of fire

